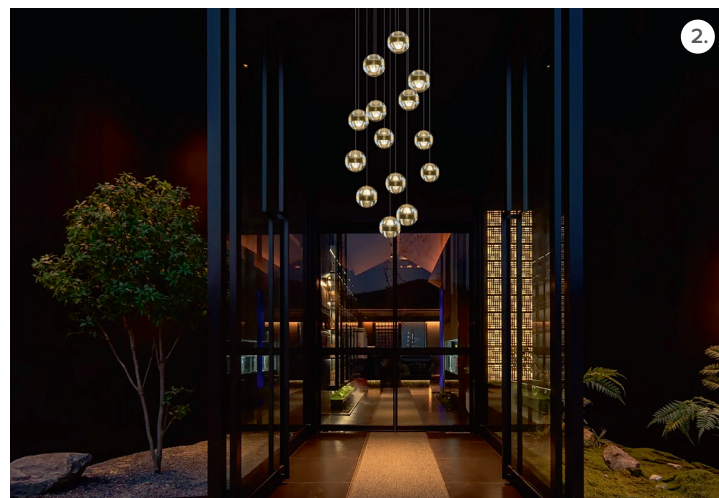




1. Chelsom Spring / Summer 25

Backed by an illustrious 75-year history in the decorative lighting arena, Chelsom is a global brand that leads with design, accentuating a timeless aesthetic and cohesive feel to its lighting while maintaining functionality, innovation and quality. The Spring / Summer 25 collection features a range of new products that showcase organic materials and neat proportions combined with the latest technology. Led by Will Chelsom and James Bartlett, the Chelsom design team has developed an array of brand-new decorative lighting designs that use a multitude of eclectic materials including brass, marble and alabaster, as well as travertine and glass.
www.chelsom.co.uk



2. Clifton Lighting Illuminati Signature Collection

Clifton Lighting delivers unique, high-quality products with the flexibility to source or create bespoke solutions tailored to individual needs, as demonstrated with the Illuminati Signature Collection. The brand's capabilities push the boundaries of LED technology while relying on the skilful nature of their artisans. Clifton Lighting meets the distinctive needs of luxury hospitality projects by offering products from the Signature Collection with next day delivery, conducting detailed site surveys and providing a bespoke, tailor-made, and quick turn-around solution that considers the project's existing control systems and lighting.
www.cliftonlighting.co.uk



3. Vincent Sheppard Bill and Bob

The Bill and Bob floor lamps in natural rattan create a cozy and inviting atmosphere. These lamps, which can be styled individually or paired together to accentuate their contrasting heights and designs, showcase beautifully organic shapes while adding texture. Their versatile design makes them ideal for a range of interiors, whether placed in a spacious hallway or a luxurious hotel lobby. Wherever they are, these lamps create a welcoming ambiance and demonstrate how Vincent Sheppard can combine a focus on quality and comfort with craftsmanship and an age-old technique to deliver qualitative, durable and appealing designs.
www.vincentsheppard.com



4. Pedrali Kawara

Taking its name from the traditional tile that adorns the roofs of sacred buildings in Japan, the Kawara collection was created in collaboration with Japanese designer Yusuke Kawai. Kawara is a versatile offering, available as a horizontal or vertical pendant, or floor lamp, with the option to choose between a single continuous element in extruded aluminium – giving the product a technical, clean and essential appearance – or adjustable modules connected by small joining rings to allow precise light direction, creating a more playful effect. Grooves running along the rounded back add elegance to the piece, introducing a refined aesthetic detail.
www.pedrali.com

New
SPRING /
SUMMER '25
COLLECTION

ARRIVING MAY 2025

CDW CLERKENWELL
DESIGN WEEK
20-22 MAY



— CHELSOM —
EST. 1947