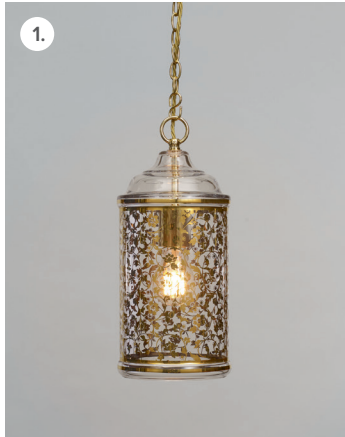




RINGS by CHELSOM
EDITION 27
NOW AVAILABLE

— CHELSOM —
CHELSOM.CO.UK



1. Hector Finch Acanto Lantern

The Acanto pendant from Hector Finch takes its shape from an antique lantern, with the silhouette recreated in blown glass. The gold leaf decal is hand-applied at a specialist workshop in northern Italy and made from real gold leaf, which is then 'cooked' on. The acanthus leaf design is a pattern that dates back centuries; Acanthus flowers were reproduced during the Renaissance and are still used today on Italian ceramics and majolica. The Hector Finch Acanto pendant is a fusion of a traditional pattern employing modern techniques and is another example of the company's use of artisanal workshops to create unique and elegant products.

www.hectorfinch.com

2. Laskasas Clarke Table Lamp

Established in Porto in 2004, Laskasas is a furniture design brand known for creating handmade furniture, upholstery and metalwork pieces for residential and commercial projects around the world. Its pieces are produced using the expertise and wisdom of craftsmen with decades of experience in operating its factory in north Portugal – one of the few remaining places where time serves quality and attention to detail. The company's new Clarke table lamp bears a striking look of exclusivity – its spherical shade pairs well with the Nero marquina polished marble base, while the light can emit a welcoming glow from any setting, be it a hallway or a living space.

www.laskasas.com

3. Il Fanale Madame

Il Fanale's latest solution comes in the form of its Madame lamps collection, featuring light and elegant lines that attract the attention of the observer like a dancing ballerina. The elements that make up its shape represent a radiating torso and meticulously proportioned head, adorned with a small sphere. Madame is available in natural brass or a two-tone version, as a pendant lamp – in single or double options – wall lamp and ceiling spotlight. Founded in 1979 by Fausto Dalla Torre and his wife Luisa, the Italian manufacturer combines a passion for lighting with an artisan knowledge to produce high quality lamps for the contract market.

www.ilfanale.com

4. Chelsom Decorative Touchless Switching

Developed in the wake of the pandemic, Chelsom's Decorative Touchless Switching (DTS) system is a customised accessory that can be built into any of its standard or bespoke lighting products, from a table lamp to a wall light application. The DTS comprises an infrared sensor that detects when a hand passes over from a distance of 5cm, activating a switch to turn the light source on and off. The switch can be mounted within a table or desk lamp base, as well as the backplate of a wall-mounted scone or reading light. The technology can also operate from 100 to 240VAC, and is fully compatible with both conventional and LED light sources.

www.chelsom.co.uk